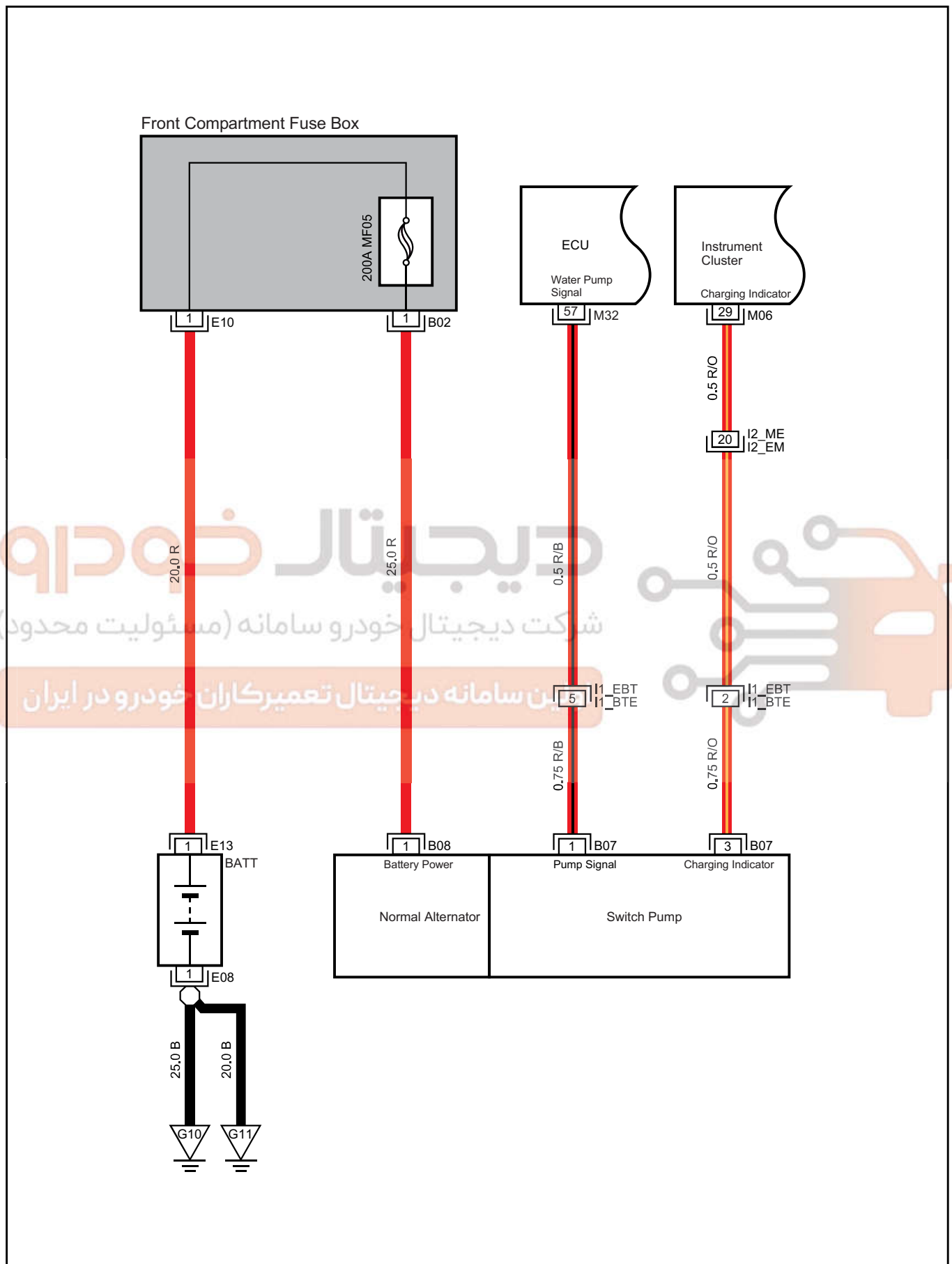


Charing System



Connector	Name	Page
B02	Alternator Power Supply	14
B07	Switch Pump	14
B08	Normal Alternator B+	14
E08	Battery Negative Pole	17
E10	UEC Power	17
E13	EJB Connecting to Power	17
M06	Instrument Cluster	20
M32	Front On-board Power	21
G10	Battery GND	40
G11	Gearbox GND	40
I1_BTE	Battery W.H. Connector 1 to Engine W.H.	14
I1_EBT	Engine W.H. Connector 1 to Battery W.H.	16
I2_EM	Engine W.H. Connector 2 to Main W.H.	16
I2_ME	Main W.H. Connector 2 to Engine W.H.	21

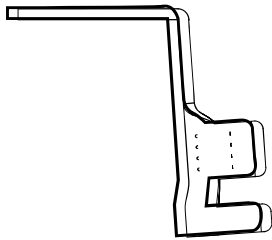
# دیجیتال خودرو

شرکت دیجیتال خودرو سامانه (مسئولیت محدود)

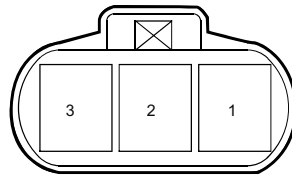
اولین سامانه دیجیتال تعمیرکاران خودرو در ایران



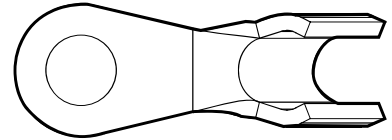
B02 Alternator Power Supply



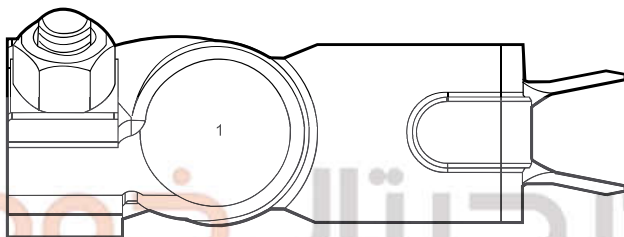
B07 Switch Pump



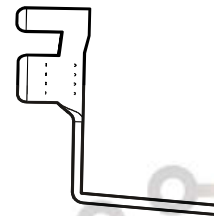
B08 Normal Alternator B+



E08 Battery Negative Pole



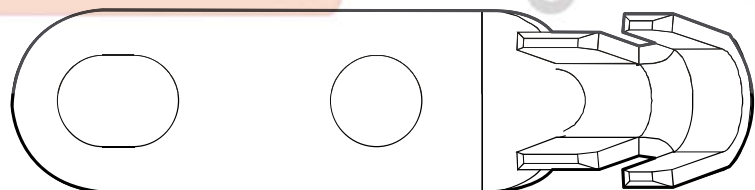
E10 UEC Power



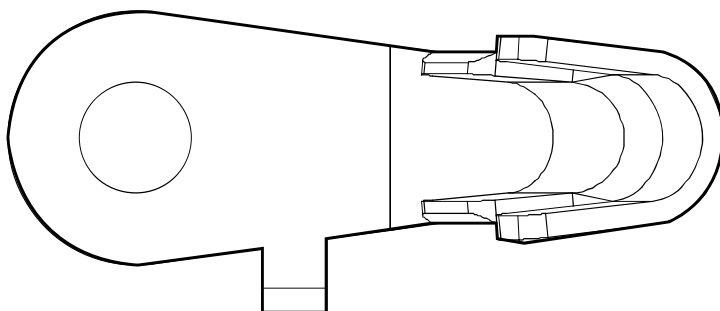
E13 EJB Connecting to Power



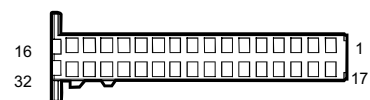
G10 Battery GND



G11 Gearbox GND

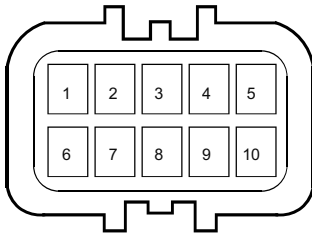


M06 Instrument Cluster

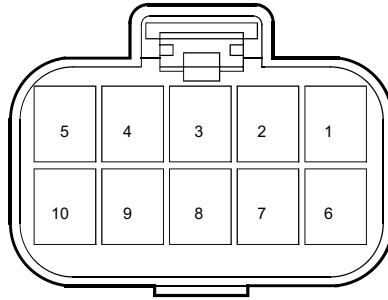


دیجیتال خودرو  
شرکت دیجیتال خودرو سامانه (مسئولیت محدود)  
اولین سامانه دیجیتال تعمیرکاران خودرو در ایران

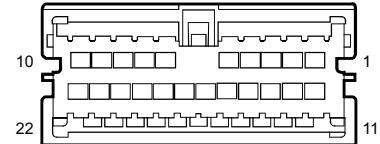
I1\_BTE Battery W.H. Connector 1  
to Engine W.H.



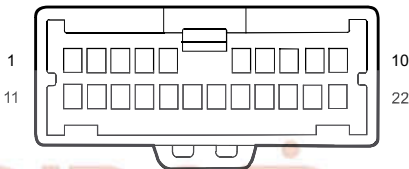
I1\_EBT Engine W.H. Connector 2  
to Battery W.H.



I2\_EM Engine W.H. Connector 2  
to Main W.H.



I2\_ME Main W.H. Connector 2  
to Engine W.H.



دیجیتال خودرو  
شرکت دیجیتال خودرو سامانه (مسئولیت محدود)

اولین سامانه دیجیتال تعمیرکاران خودرو در ایران

